

Surpahs Swift Drum Grater User Manual

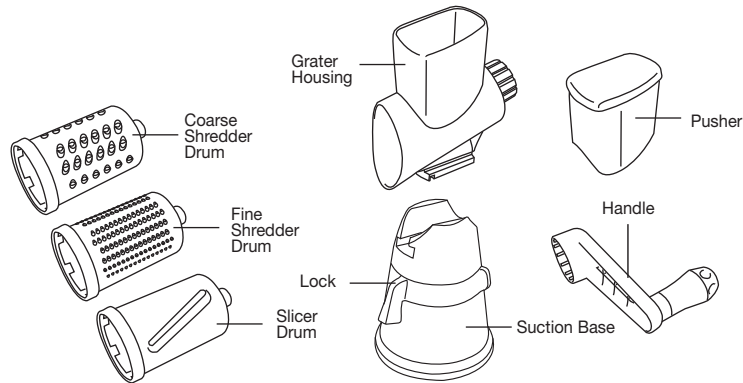
Model No.: WLDG-0182Z

Please read the entire instruction manual before using the product and then save it for future reference. We reserve the right for any errors in text or images and any necessary changes made to technical data. In the event of technical problems or other queries, please contact our Customer Services.

This manual can also be downloaded through www.surpahs.com

About Product Code

Please find your **Product Code** on the **Customer Card** that comes in the package, and register your product for **extended warranty**.

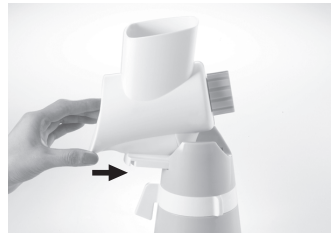


USE & CARE

- Sharp blades; Use, wash and store with care; Keep out of reach of children;
- Cut food to fit sizes. Do not overfill;
- Do not insert fingers in grater house, use pusher for safety;
- Wash and dry immediately after use to avoid staining;
- Do not use corrosive cleaning products and excessive use of detergent;
- Dishwasher and dish sterilizer safe (except suction base); keep temperature below 65°C / 150°F;
- Clean suction base with a damp cloth;
- Use on clean & flat surface;
- Keep away from high heat. Do not put this product in oven or microwave oven.



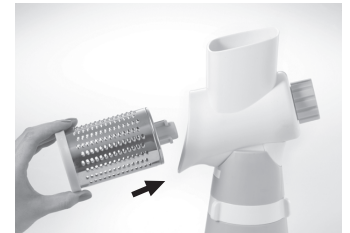
1. Use soft cloth to clean the bottom of suction base before use; use on clean & flat surface.



2. Insert grater house into suction base.



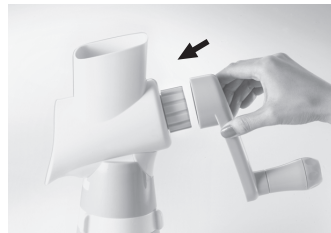
3. Turn clockwise to lock grater house and suction base.



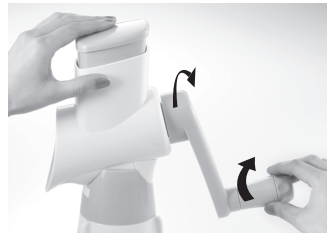
4. Insert a drum, "click" to lock.



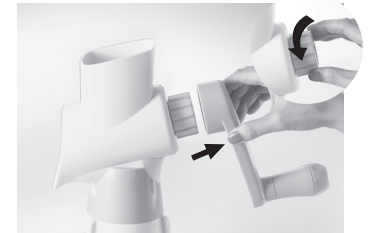
5. Hold the drum, turn the knob and "click" to lock



6. Install the handle and "click" to lock.



7. Use pusher to press, turn handle clockwise to grate.



8. Remove handle, hold the drum and unlock the knob to release for cleaning.

WARRANTY

This product is warranted against defects in materials and workmanship for one year from the date purchase, when used in accordance with the instructions provided. This warranty does not cover damages or wear resulting from accident, misuse, abuse, commercial use, or unauthorized adjustment and/or repair.

C8KE INC. shall not be liable for loss of use or any other incidental, consequential or indirect costs, expenses or damages. There are no express warranties except as listed above. This warranty gives you specific legal rights, and you may have other rights which vary from state to state.

Should this product require service (or replacement at our option) while under warranty, please visit website www.surpahs.com and submit a support ticket.

Surpahs®, C8KE INC.
501 Silverside Rd, Suite 105
Wilmington, DE 19809, USA
www.surpahs.com


Designed & Engineered in Hong Kong
by York Wong



Scan for shopping
and support